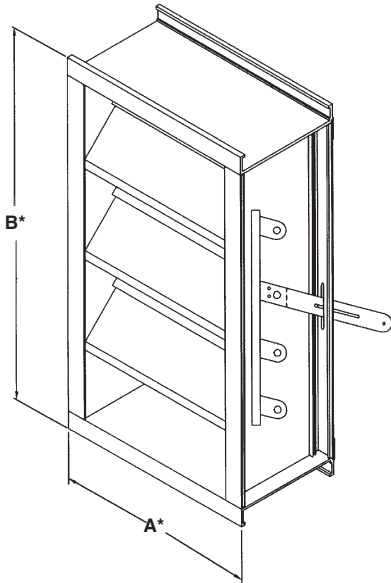




1300 ENTERPRISE ROAD GENEVA, ALABAMA 36340-0580 800-239-4621 FAX 1-800-508-1469 www.reliablelouvers.com

445RBABL, 445RBABL125 AND 645RBABL ADJUSTABLE LOUVER EXTRUDED ALUMINUM



STANDARD CONSTRUCTION

STANDARD CONSTRUCTION

FRAME

445RBABL - .081 (2.1) - 4" (102) deep, 6063T5 extruded aluminum with .081" (2.1) nominal wall thickness. 445RBABL125 - .125 (3.2) - 4" (102) deep, 6063T5 extruded aluminum with .081" (2.1) nominal wall thickness. 645RBABL - 6" (152) deep, 6063T5 extruded aluminum with .125" (3.2) nominal wall thickness. Caulking surfaces provided.

BLADES

6063T5 extruded aluminum. 445RBABL - .081" (2.1) nominal wall thickness. J-style blades are adjustable to 45° angle. 645RBABL - .081" (2.1) nominal wall thickness. J-style blades are adjustable to 70° angle. 445RBABL125 - .125" (3.2) nominal wall thickness. Blade spacing is approximately 4 3/4" (121) center to center.

SCREEN

3/4" x .051" (19 x 1.3) expanded, flattened aluminum bird screen in removable frame. Screen adds approximately 1/2" (13) to louver depth.

BEARINGS

Stainless steel sleeve pressed into frame.

AXLES

1/2" (13) plated steel hex.

FINISH

Mill.

LINKAGE

Concealed in frame.

ACTUATOR

Locking louver quadrant.

MINIMUM SIZE

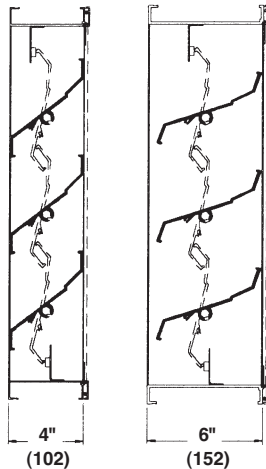
12"w x 12"h (305 x 305).

APPROXIMATE SHIPPING WEIGHT

445RBABL - 4 lbs. per sq. ft.
645RBABL - 4.5 lbs. per sq. ft.

MAXIMUM FACTORY ASSEMBLY SIZE

Shall be 60" x 96" (1524 x 2438). Louvers with optional blade and jamb seals shall be 48" x 96" (1219 x 2438). Louvers larger than the maximum factory assembly size will require field assembly of smaller sections.



FEATURES

The 645RBABL and 445RBABL offer:

- Low torque operation and architecturally pleasing appearance with low leakage performance.
- Hexagonal shaped axles assure positive blade alignment and low operating torque.
- Concealed blade linkage is protected from weather exposure and reduces required installation depth.
- Blade and jamb seal options provide tight blade-to-blade and blade-to-frame closure, allowing less than 4 cfm per sq. ft. at 1/2" pressure differential.

VARIATIONS

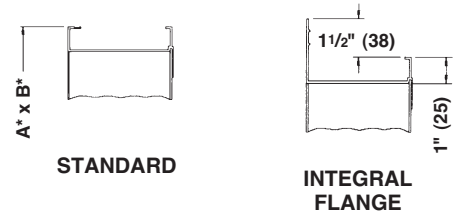
Variations to the basic design of this louver are available at additional cost. They include:

- Extended sill
- Front or rear security bars
- A variety of bird and insect screens
- Filter racks
- Selection of finishes: prime coat, baked enamel (modified fluoropolymer), epoxy, Pearledize 50 & 70, Kynar, clear and color anodize. (Some variation in anodize color consistency is possible.)
- Blade edge and jamb seals.
- Manual, electric or pneumatic actuators.

Available with .125" (3.2) construction throughout, refer to as **445RBABL** and **645RBABL**.

Consult Reliable for other special requirements.

FRAME CONSTRUCTION



Dimensions in inches, parenthesis () indicate millimeters.

*Units furnished 1/4" (6) smaller than given opening dimensions.

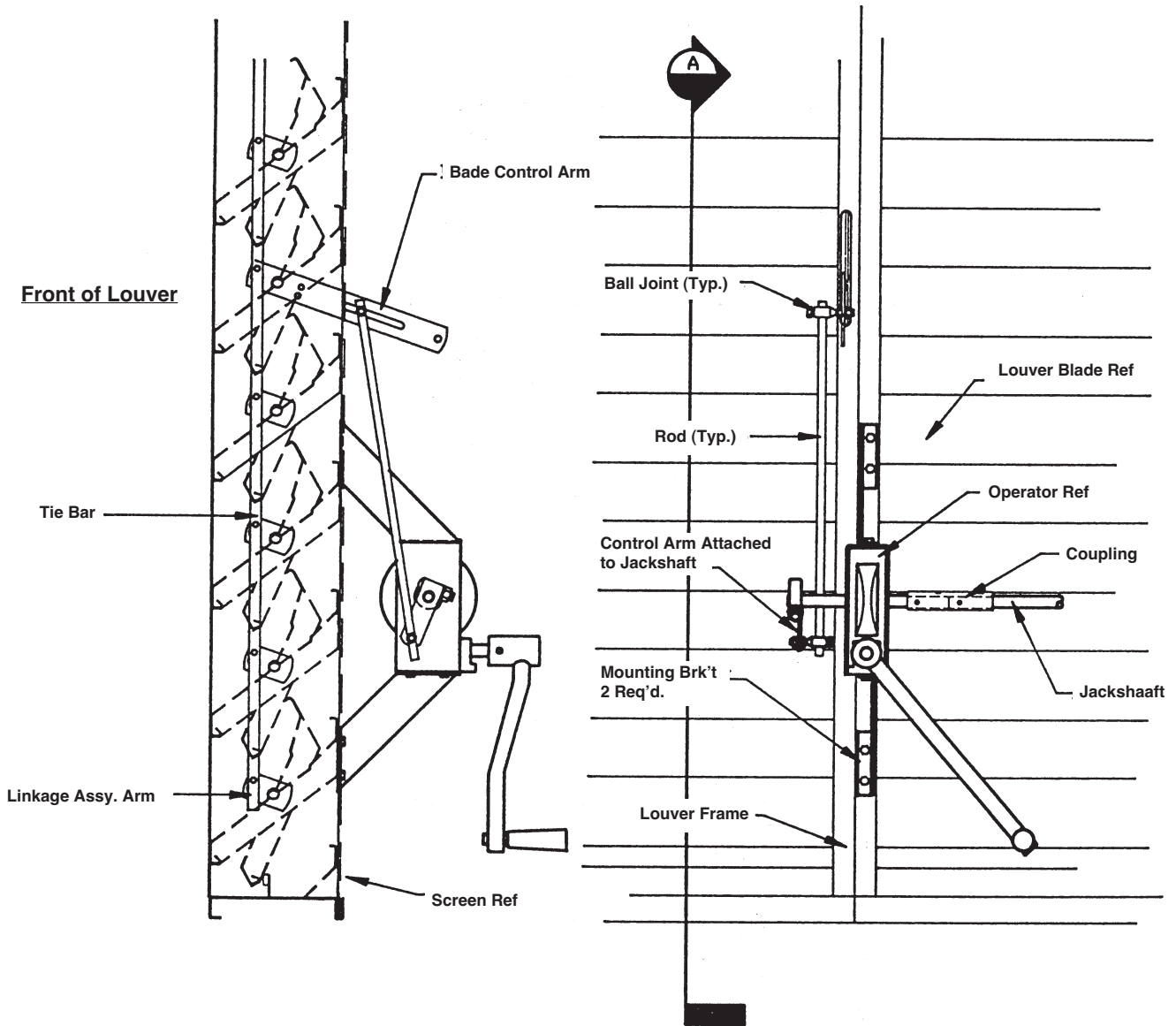
TAG	QTY.	SIZE		FRAME	VARIATIONS
		A*-WIDE	B*-HIGH		
PROJECT ARCH./ENGR. REPRESENTATIVE					LOCATION CONTRACTOR DATE





MOVABLE LOUVER DETAILS

WORMGEAR OPERATOR



A SECTION THRU
N.T.S. SECTION

PARTIAL REAR ELEVATION
N.T.S. ELEVATION

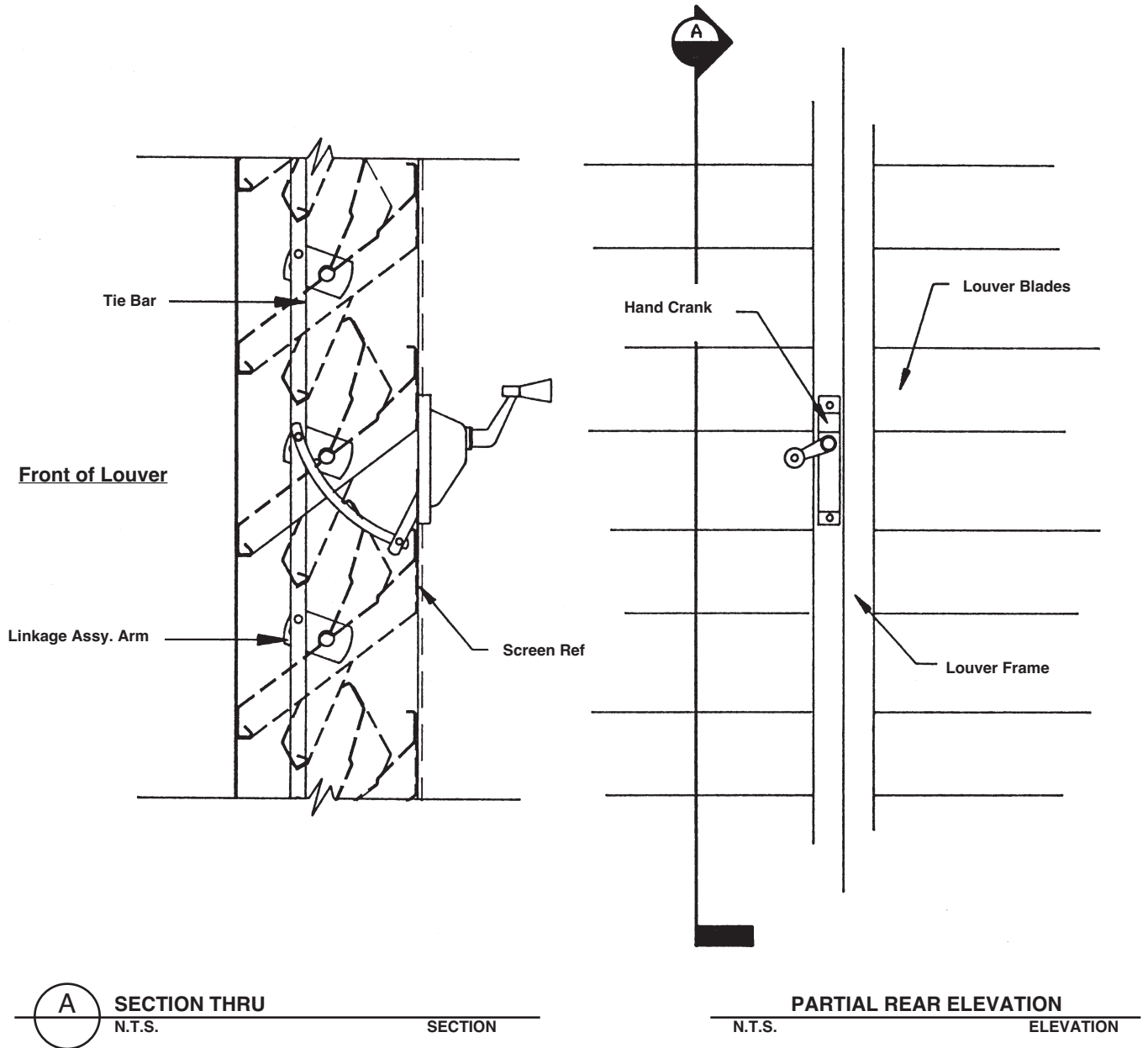


DWG. NO.
60-020687-00A



MOVABLE LOUVER DETAILS

SMALL HAND CRANK OPERATOR



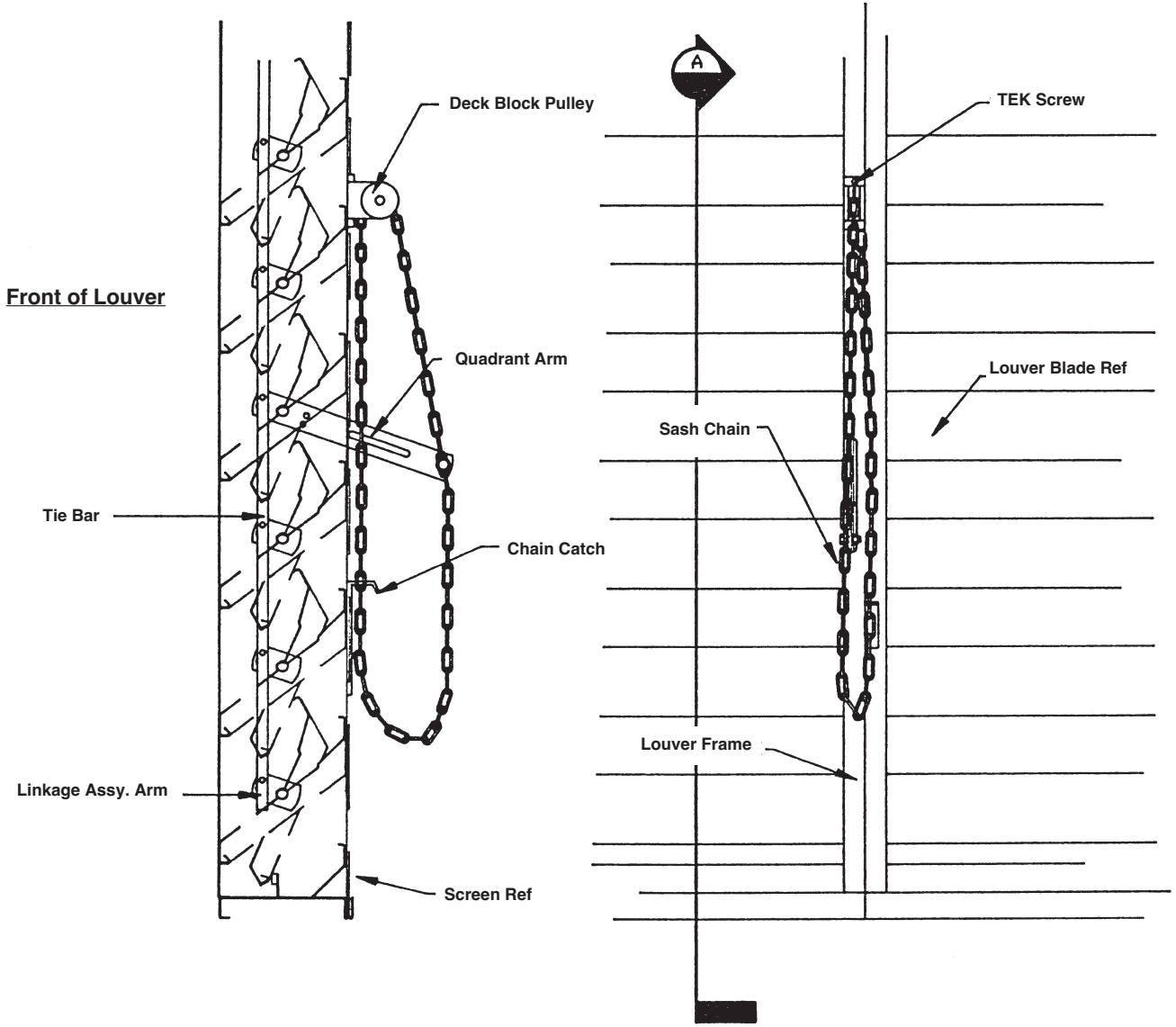
A SECTION THRU
N.T.S. SECTION

PARTIAL REAR ELEVATION
N.T.S. ELEVATION



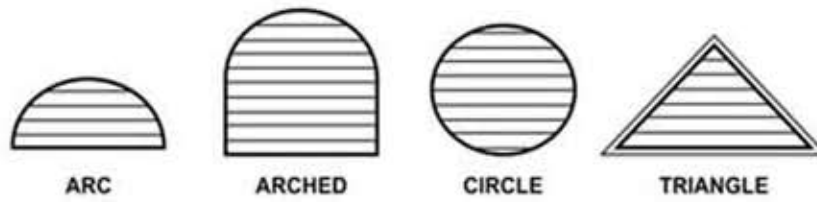
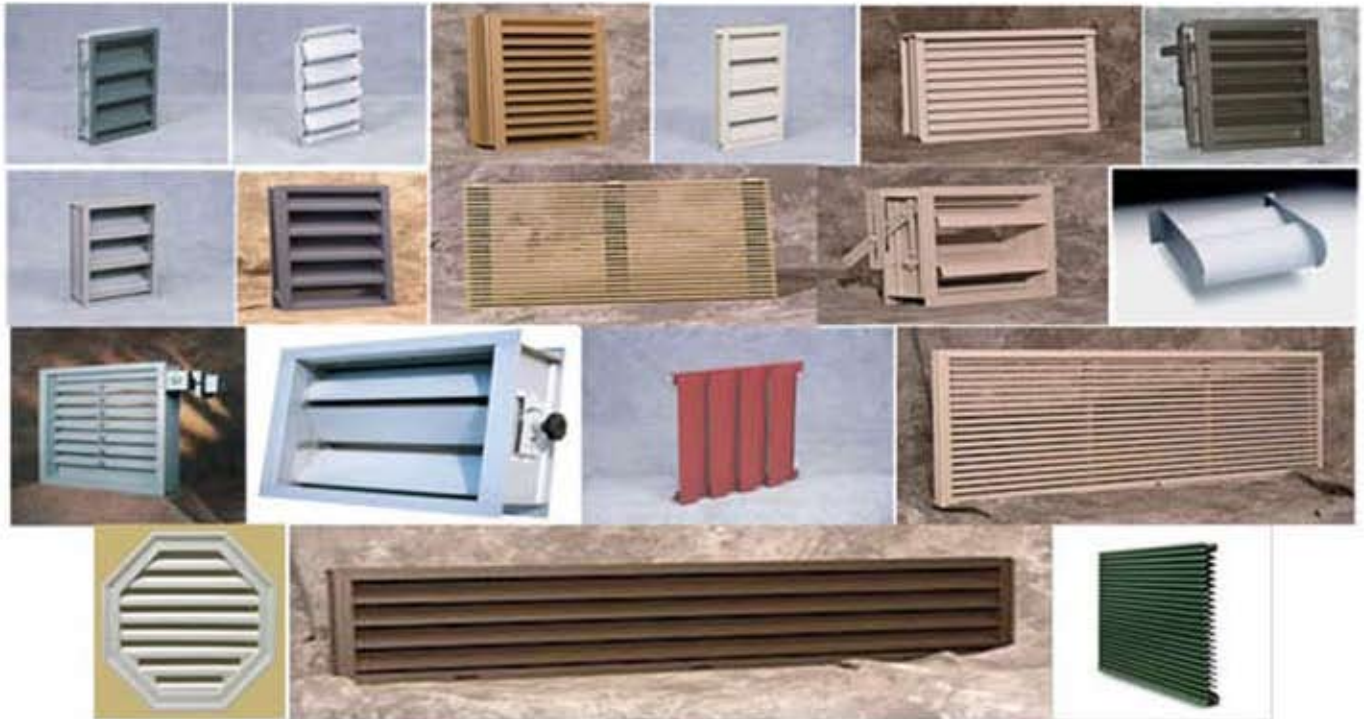
DWG. NO.
60-020689-00A

LOUVER CHAIN OPERATOR



A SECTION THRU
N.T.S. SECTION

PARTIAL REAR ELEVATION
N.T.S. ELEVATION



LOUVERS

We have 1000's of submittals, and color options, give us a call. We will send you a spec sheet, give you a time frame and get a quote on just about anything !

Call: 800-810-3280 ext. 101

